



Australia's Representative  
International Cartographic Association

# MSI- Connected!

Newsletter of the Mapping Sciences Institute, Australia

AUGUST 2013

VISIT [www.mappingsciences.org.au](http://www.mappingsciences.org.au)

## Content highlights

Email to the editor	1
Strategies for mapping scientists	2
ICC map exhibition entrants	3
NSW Division seminar	6

## FROM THE EDITOR

Welcome to the August 213 edition of MSI-Connected! In this edition, we celebrate and promote the high quality Australian entries for the International Cartographic Conference Map Exhibition. Thank you to all the entrants - we wish them the very best in the judging and competition stakes. Improve your personal or work library by acquiring these map products (some maps are available for free to the public). There is no better way to have your work displayed than at an international level, with literally thousands of cartographers and allied professionals viewing the products in Dresden at the ICA ICC. On page 6 there is a promotion for the NSW Division seminar which has a stellar line-up of



presenters, and interesting topics as well. Also, a summary of the MSIA Strategy is provided which is the culmination of work from the MSIA Executive and Council members. If you would like to contribute your thoughts and comments about how MSIA can continue to provide services to members, represent members locally, nationally and internationally, and continue to be relevant in an ever changing global economy, refer to the contacts on the bottom of page 2.

*Adam Ladhams*

PS. The MSIA National President has been on holidays – there is no President's Report in this edition.

## EMAIL TO THE EDITOR

A big thank you to John Cleverdon (from Victoria) who emailed me about the last two editions of MSI-Connected! John has written:

*Have you seen the movie/doco 'Longitude' about John Harrison's development of an accurate chronometer/timepiece for helping to determine longitude at sea in the 1700's?*

Thanks John. No I haven't seen the movie but I have read the book 'Longitude' by Dava Sobel. The BBC recently released the documentary "Precision: the measure of all things, time and distance". There are some clips for viewing within Australia. <http://www.bbc.co.uk/programmes/b02xbjmf/clips>. If you would like to forward a review of any book or digital media, I would be more than happy to include it in the next edition of MSI-Connected!

## **STRATEGIES FOR MAPPING SCIENTISTS (or Cartographers, if you prefer)**

Following the March 2011 Council Meeting, an effort was made to venture down the track of “Strategic Planning. “ Responses on that occasion were limited and little progress was made.

At the more recent Council Meeting of April 2013, it was proposed to re-visit this project. I, as Executive Chairman, have taken on the role as co-ordinator. On this occasion the responses have been heartening, to the extent that to date eight action items have been proposed by our “Council Circle“. Some of these have been completed or are not being proceeded with at this stage (they are still open to revival if necessary).

The ones that are ongoing at this point are as follows .....

### **Action No.1**

Invitation to replace two retiring councillors

### **Action No.2**

To provide closer ties with other organisations, particularly ANZmapS.

### **Action No.6**

To provide a set up for a social media presence

### **Action No.7**

To provide a setting for conferences and other speculative ideas.

### **Action No.8**

To provide a brief for engaging a consultant, if we finally deem that such is necessary.

The idea behind the Strategic Planning concept is to sponsor growth in the Institute and generate more involvement in its affairs by a wider spread of its membership. If any member would like to get involved by presenting their views or suggesting other strategies, please do so. In such instances please contact myself by email at [armitage1@australis.net](mailto:armitage1@australis.net), or Keith Smith at [msiau@gil.com.au](mailto:msiau@gil.com.au).

***Contribution by Alan Armitage***



Far Left:

Kangaroo Island – Souvenir tourist map and guide (5th edition)

Publisher: Flat Earth Mapping

Author: John Frith

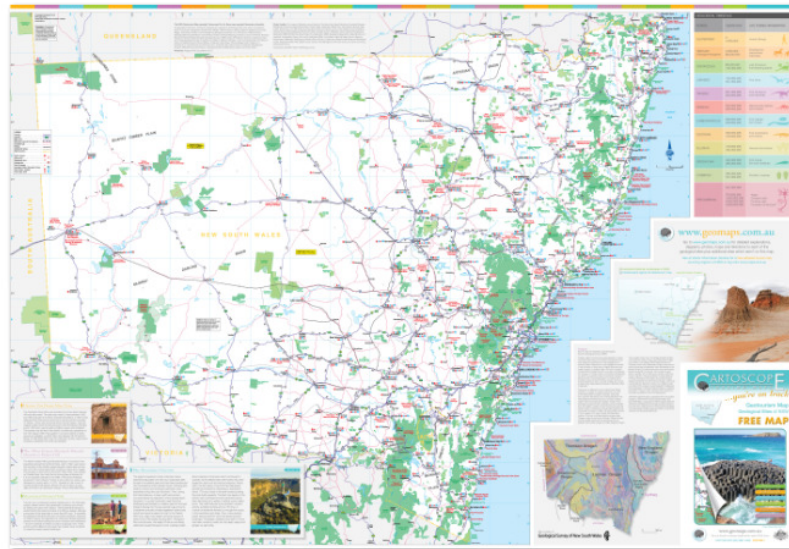


Left:

Wilson's Promontory Outdoor Recreation Guide

Publisher: Spatial Vision

Author: Glenn van der Knijff

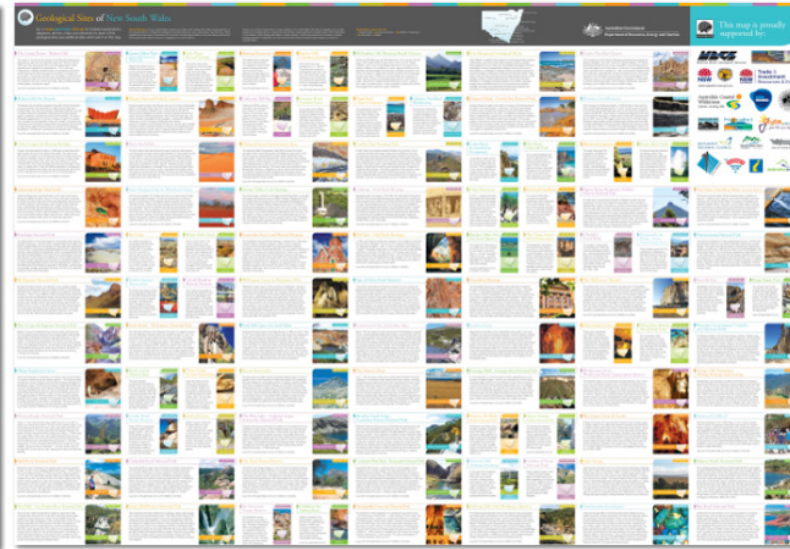


Above:

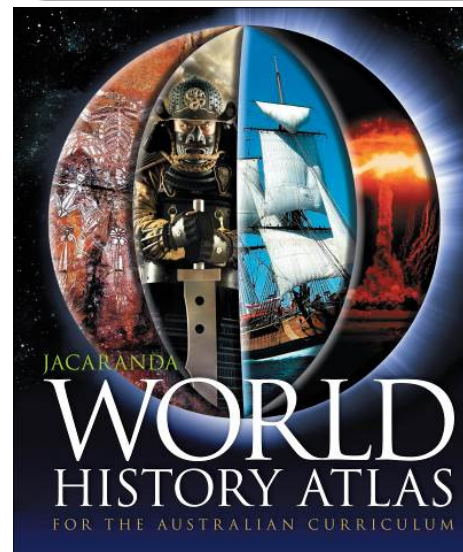
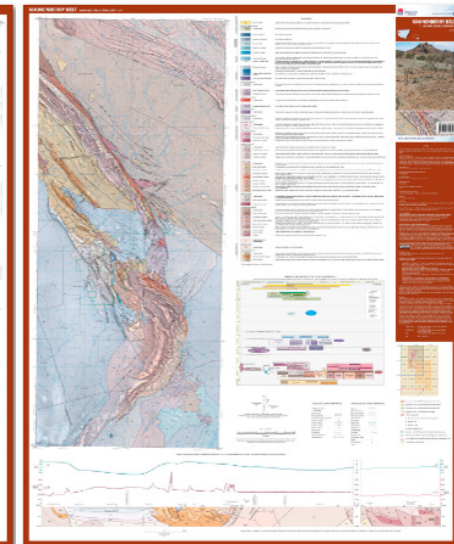
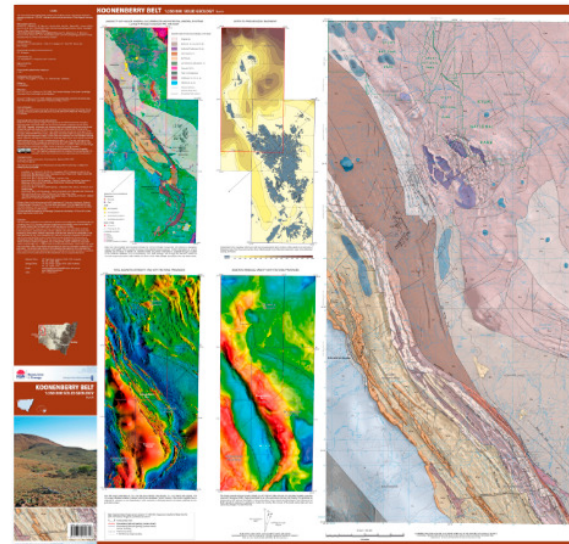
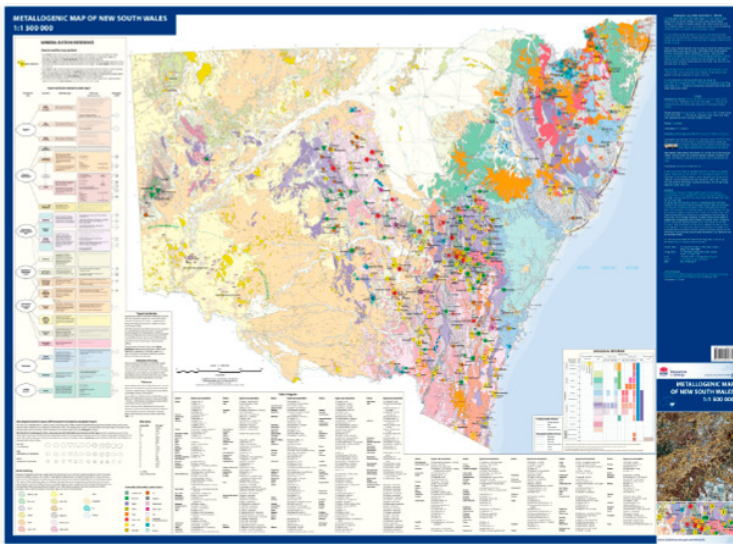
Geotourism Map – Geological Sites of NSW

Publisher: Cartoscope Pty Ltd

Author: Cartoscope Pty Ltd, compiled by Carrol Cummings







L-R top: Metallogenic Map of New South Wales 1:1 500 000. Publisher: NSW Department of Trade and Investment, Regional Infrastructure and Services. Authors: Downes P.M., Blevin P.L., Reid W.J., Barnes R.G. & Forster D.B.; Koonenberry Belt 1:250 000 solid geology maps (north & south map). Publisher: NSW Department of Trade and Investment, Regional Infrastructure and Services. Authors: Gilmore P.J., Greenfield J.E., Mills K.J., Musgrave R.M., Hegarty R.A., Brown R.E., Vickery N.M.

L-R bottom: Explore Australia's National Parks (2nd edition). Publisher & Author: Explore Australia.; Wooroonooran sample map.; Jacaranda World History Atlas for the Australian Curriculum. Publisher: John Wiley and Sons Australia. Author: Sue Burvill-Shaw.; Jacaranda myWorld History Atlas. Publisher: John Wiley and Sons Australia. Authors: William Lewis, Sue Burvill-Shaw, Naomi Barnes, Leigh Ann Cadzow-Andreas, Aedeen Cremin, Susan Hinton, Robert Lewis, William Lewis, Ross Smith, Bradley Wood.





Jubilee year: Buckingham Palace dominates the landscape in this aerial view of London.

*The collection of aerial photographs giving a spectacular bird's eye view of Britain from above has been released to mark the Queen's Jubilee year. Bustling cities contrast with serene stretches of glorious countryside as sites that might seem ubiquitous from the ground are transformed into unique and wonderful images when viewed from above. The heart-stopping shots are the work of aerial photographer Jason Hawkes who developed a love of Britain 's varied landscape since taking his first flying lesson 20 years ago.*



**Everyone is invited to attend**



This successful daylong seminar will again be held on 24th October 2013 at the Aspire Hotel, Bulwarra Road, Ultimo. The entire seminar program is relevant to those involved in the Mapping Sciences including Cartography; GPS; Satellite Imagery; GIS/LIS; Surveying – Land – Engineering – Mining – Hydrographic; Town Planning and Environmental Management etc.

Past seminars have been warmly endorsed by attendees and many are repeat participants simply because of the diversity and quality of presentations.



Speakers this year have been sourced from esri Australia, The University of Sydney, University of New South Wales, Land & Property NSW, Australian Bureau of Statistics, Aurecon and the State Library of NSW.

A number of interesting industry issues will be presented by leading academic and industry professionals.



The seminar is recognised for continuing professional development (CPD) by MSIA (CPD = 10 points), Institution of Surveyors NSW and Surveying & Spatial Sciences Institute (CPD = 5 points).



Registrations are now open so register soon to ensure your attendance; this will be an outstanding seminar. Registration includes the seminar plus a mouth watering lunch and the opportunity to network with colleagues in the industry.



Seminar enquiries to Hank Staal at [msia-nsw@bigpond.com](mailto:msia-nsw@bigpond.com) or [Staal1@bigpond.com](mailto:Staal1@bigpond.com)



This is a wonderful opportunity to hear our industry's leading speakers and I look forward to seeing as many of you as possible at the seminar.



Kind Regards  
Colin Mitford FMSIA,  
President, Mapping Sciences Institute Australia (NSW Division)



## WHAT IS IT???

This is a one in a million photo. The answer is off to the side.



This is a picture that someone took who works on an oil rig. He was going to take a picture of the lightning and was unaware of the tornado.

## IN THE MEDIA – “11 DISTRACTING STINKY, PRODUCTIVITY-KILLING LUNCHES YOU SHOULD NEVER BRING TO THE OFFICE”



Recently, I read an article from declaring food items that should not be consumed in an office environment. Unless you work at home by yourself and do not have clients visiting your premises, then there are particular food smells that should be avoided. For instance, any fish or seafood is a no-no. Same for hot food, curries, cabbage soup, parmesan cheese or any other food that may bring on the onset of instant nausea. Putting aside my stifled attempt at food related humour, the article went on to state that bringing smelly foods impact on your chances of promotion and effect your workplace relationships with others in your office – maybe someone should tell that to my work colleagues the next time they decide to bring last night’s left-overs containing tuna, aromatic meatballs, spicy vindaloo or any food purchased from the on-site cafeteria (nobody should eat there despite getting the all clear from the health department) and eat at their desk, that this raises the potential for the entire workplace to be de-contaminated by fire fighters in breathing apparatus, for co-workers are admitted to hospital with breathing problems from the toxic fumes or the risk of the need to redecorate the place after the food fumes has stripped the paint from the walls and ceiling.

So if my stinky food work colleague is by chance reading this article, please heed this as a warning – I still respect you as my Director, but eat your intoxicatingly smelly food elsewhere and not in the office.

The author of “11 Distracting Stinky, Productivity-Killing Lunches You Should Never Bring To The Office”, Miles Kohrman, is a writer for the Fast Company. Miles has also penned other useful articles including “5 Tips to Stay Productive All Day Long” and “3 Fast Ways To Tame Your Unruly Inbox”.

Article source: <http://www.fastcompany.com/3014248/how-to-be-a-success-at-everything/11-distractingly-stinky-productivity-killing-lunches-you-s?partner=newsletter>

Comments by Adam Ladhams

*Adam is (clearly) a first time writer at satirical and humorous content, who should probably stick to his day time job.*

## New Member

Welcome to MSIA’s newest member - Nasi Racaca (from Western Australia)

For more information about membership and other cartography matter, visit [www.mappingsciences.org.au](http://www.mappingsciences.org.au)